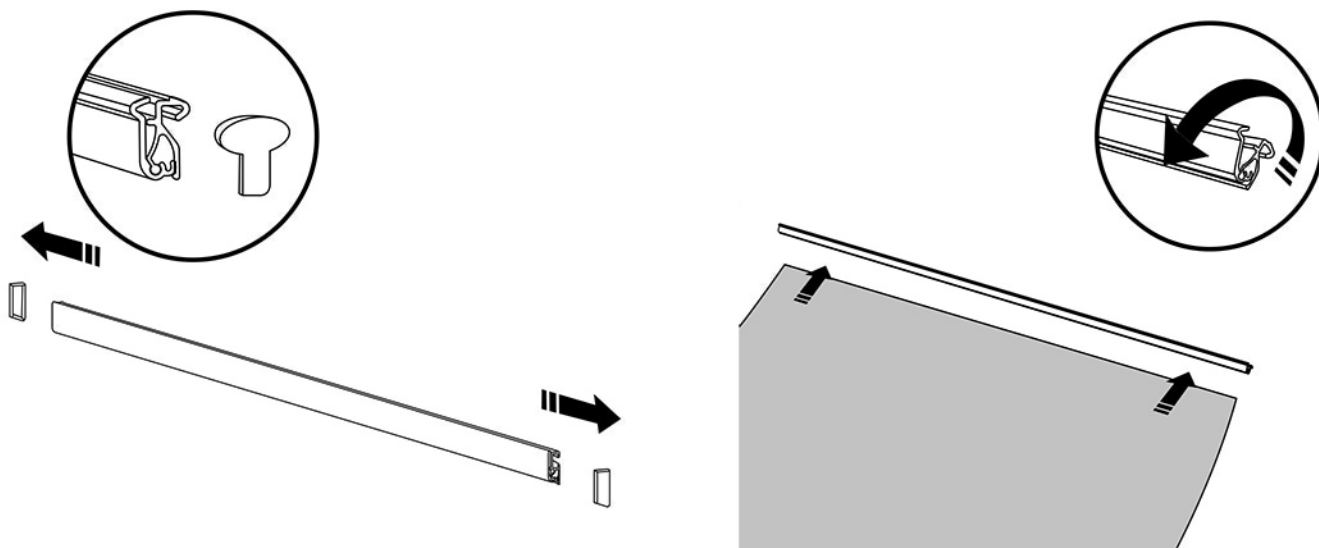


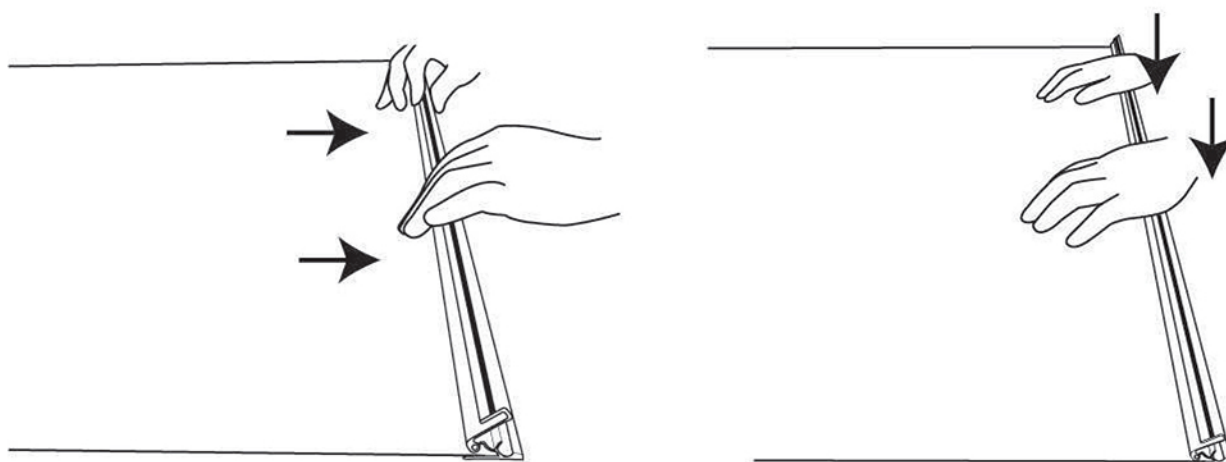
# ***MOUNTING GRAPHIC*** ---

## ***Snap Profile***

1. Open the snap profile near the end without any tools.



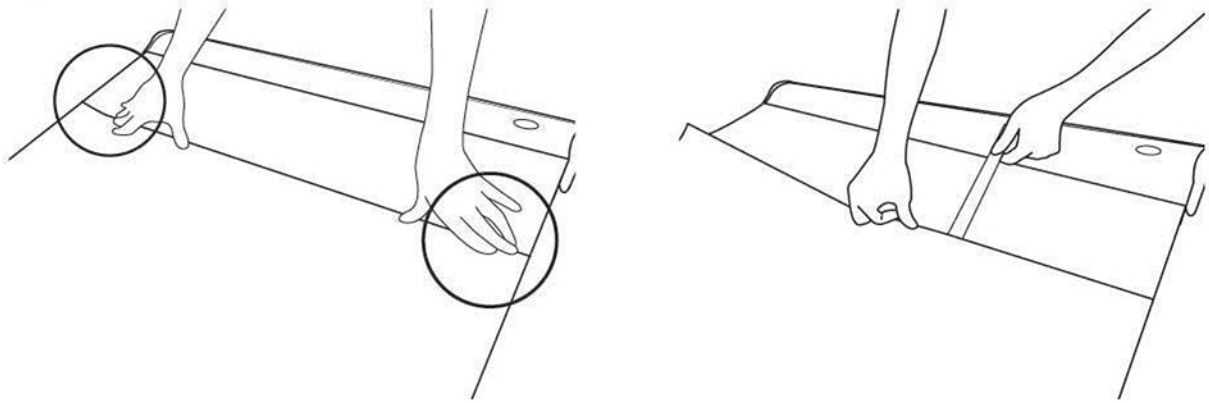
2. Insert the graphic into the profile and press hard.



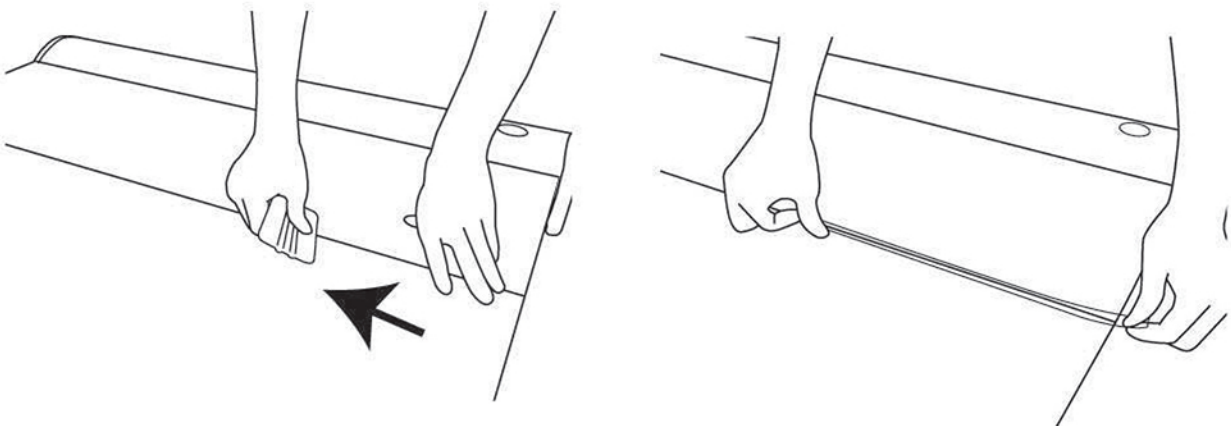
# ***MOUNTING GRAPHIC***

## ***Part 2 - Attach Graphic Onto Base***

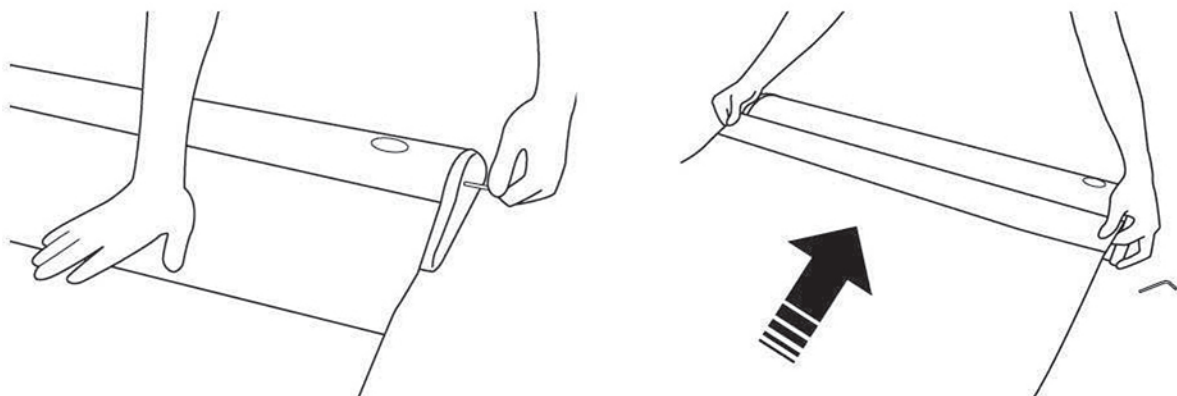
- 1** Attach the bottom of the graphic by aligning it with the adhesive tape on the white PVC.



- Press the graphic firmly and apply extra tape for reinforcement.

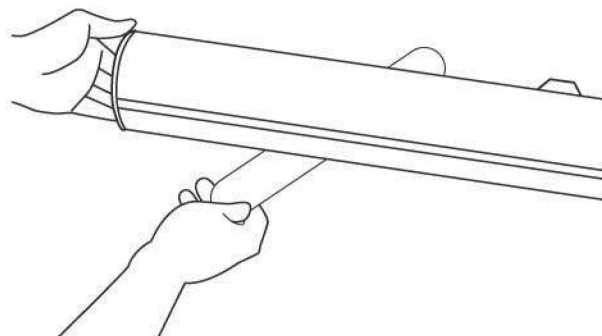
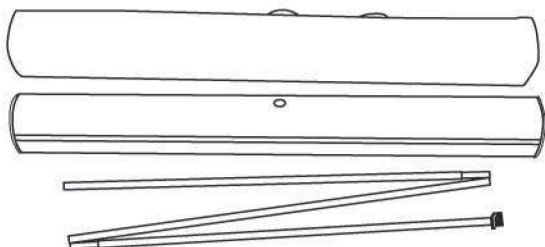


- Hold the graphic while removing the key. Let the graphic retract into the base slowly.

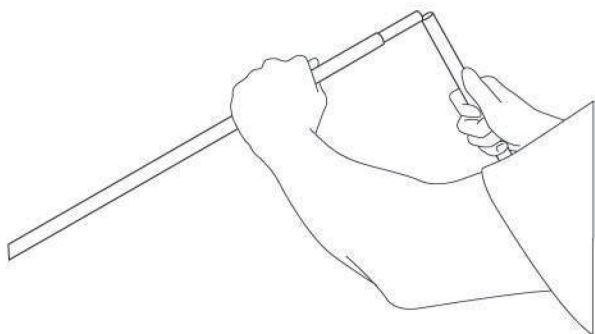


# SET UP INSTRUCTION

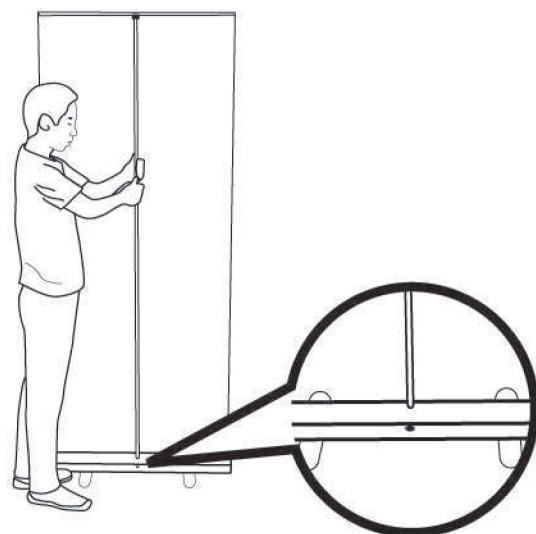
1. Turn out the feet of the base.



2. Unfold the 3-parted pole.



3. Insert the pole onto the cup of the base.



**CAUTION: Improper way of set up!**