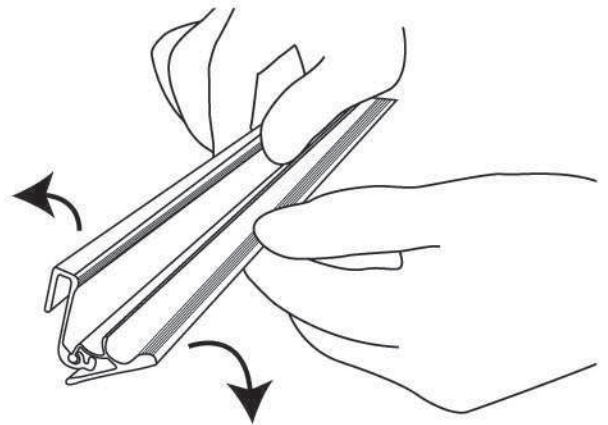
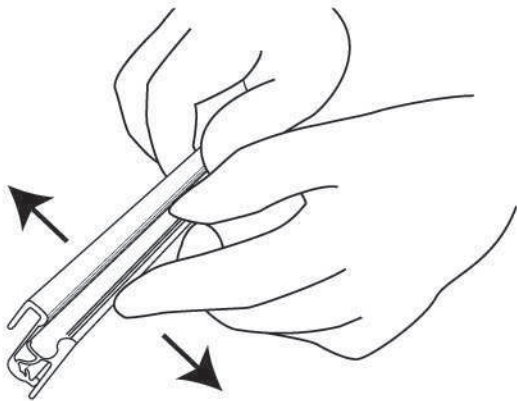


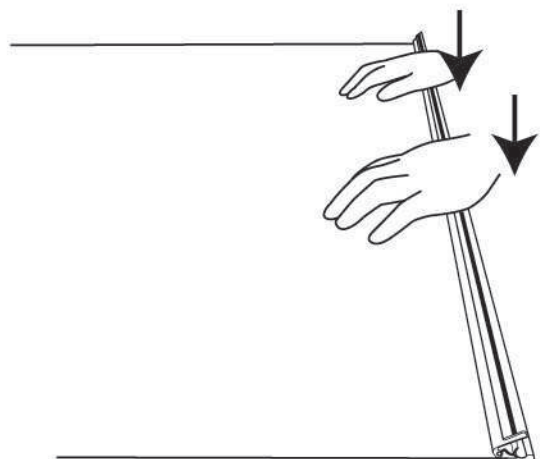
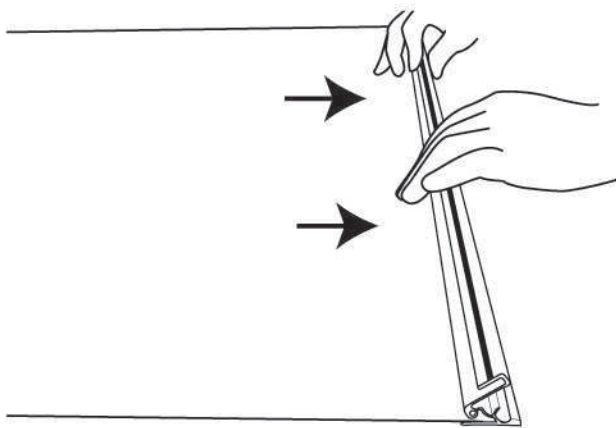
MOUNTING GRAPHIC

Snap Profile

1. Open the snap profile near the end without any tools.



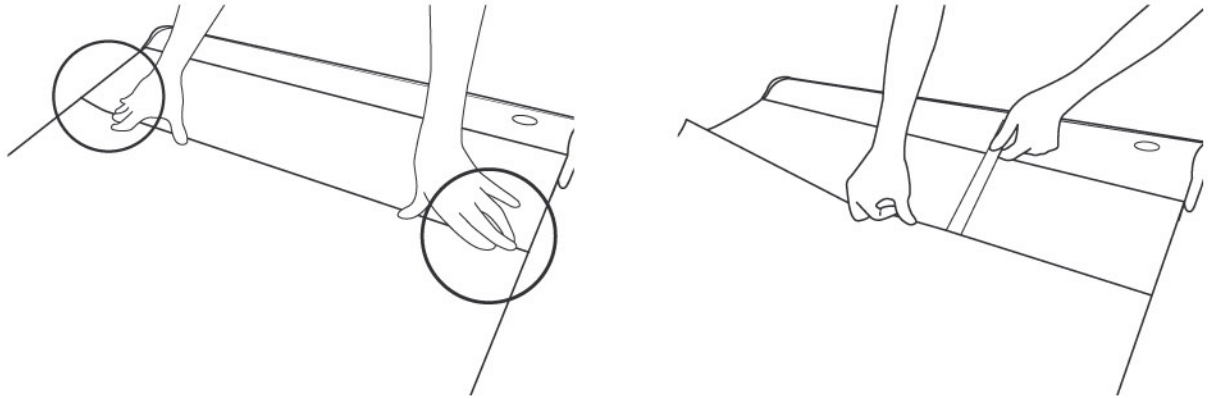
2. Insert the graphic into the profile and press hard.



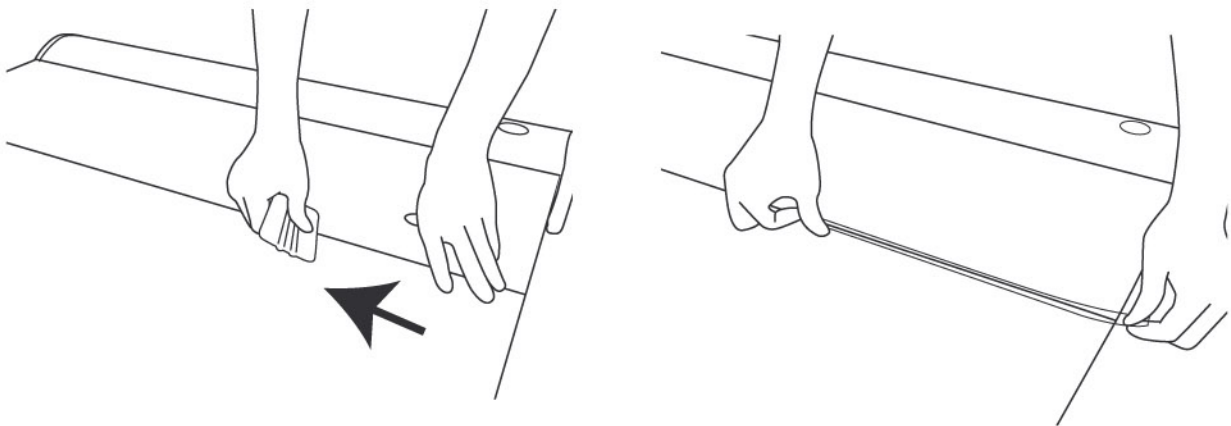
MOUNTING GRAPHIC

(P.2)

5. Attach the bottom of the graphic by aligning it with the adhesive tape on the white PVC.



6. Press the graphic firmly and apply extra tape for reinforcement.



7. Hold the graphic while removing the key. Let the graphic retract into the base slowly.

