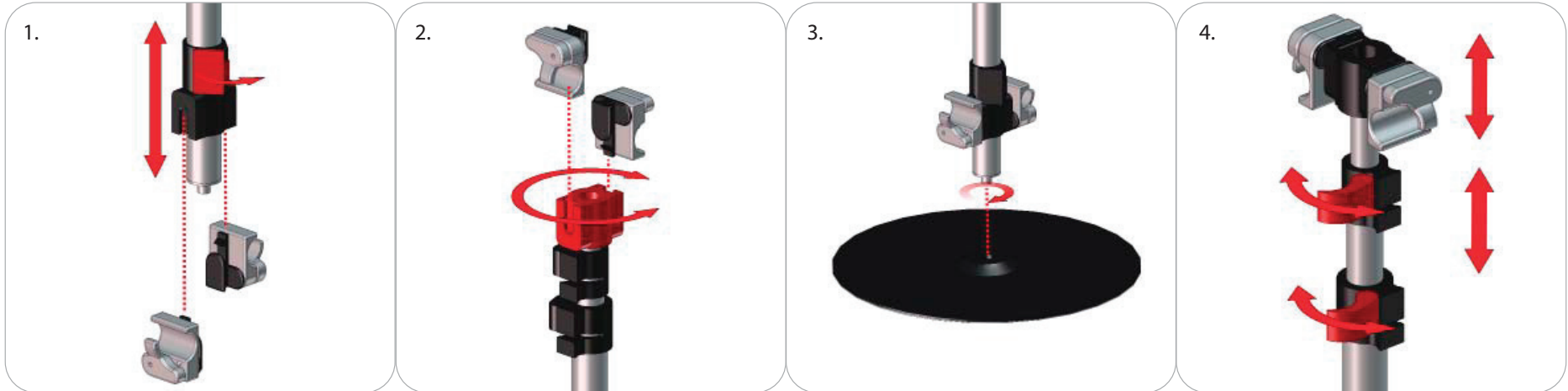


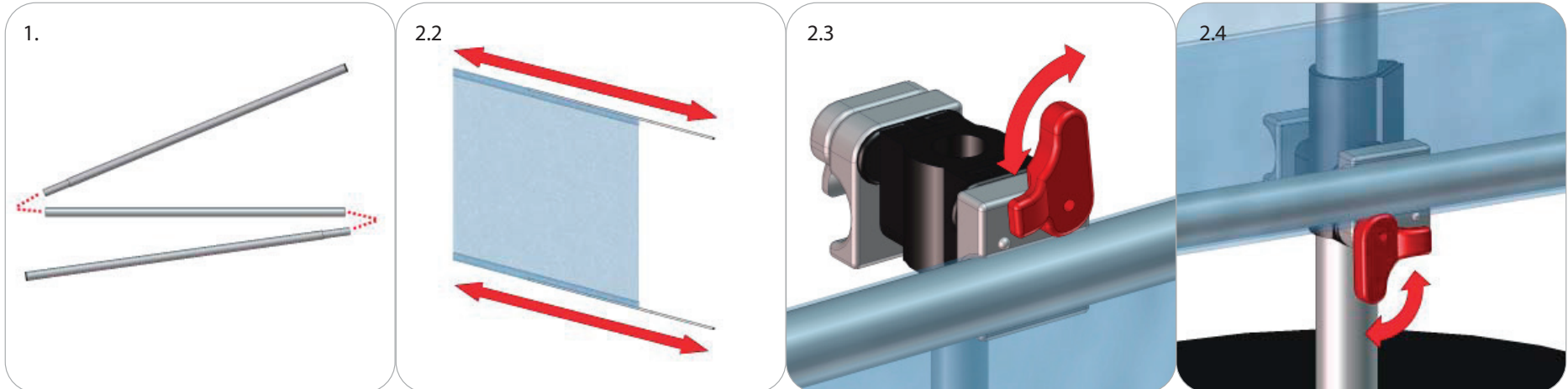
Simplicity Banner Wall Instructions

Support Pole Assembly: Bases, Telescoping Vertical Posts, and Horizontal Tube Clamps



1. Take one telescoping vertical pole and attach the horizontal tube clamp into the bottom adjustable housing. If double sided, you'll need to install 2 clamps. **Do not remove the bottom adjustable housing.**
2. Attach tube clamps into the top 360° rotating housing.
3. Screw the telescoping vertical post into the round base.
4. Extend the telescoping vertical support pole and lock in place with the lever locks.
5. Make sure all connections are secure.

Banner Attachment: Horizontal Support Poles, Fabric Graphic and Horizontal Tube Clamps



1. Take the 3 section horizontal support poles and fit them together.
2. Insert the support poles into the pole pockets at the top and bottom of the graphic.
3. Attach the top of the graphic with the horizontal support poles to the vertical support poles using the tube clamps. The levers on the tube clamps are spring loaded and will return to the locked position when released.
4. Attach the bottom of the graphic to the lower tube clamps.
5. Adjust the height of the support poles if necessary so the graphic hangs smooth.