

Wave Instructions



Parts



Base



Feet



Support Pole



Graphic rail

Banner Installation and Set Up



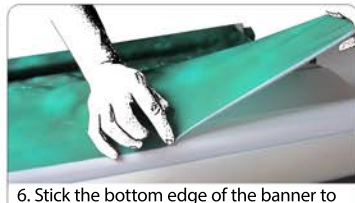
1. Remove the end caps from the graphic rail, loosen the set screws with the included allen wrench.



5. Remove the base end caps from both sides of the base.



2. Slide the graphic into the opening in the graphic rail.



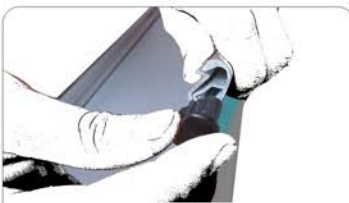
6. Stick the bottom edge of the banner to the adhesive strip on the leader. Apply tape to the seam between the banner and leader for extra security.



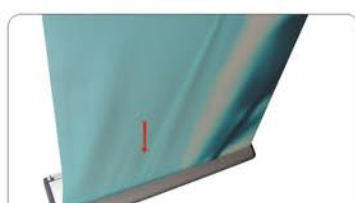
3. Close the graphic rail and tighten the set screws to firmly hold the banner.



7. While holding the banner, pull the locking pin to release the tension on the roller.



4. Replace the graphic rail end caps.



8. Allow the banner to retract into the base while keeping it centered.



9. Align the pin on the foot with the hole in the bottom of the base.



10. Open the locking clamp on the foot and push it up against the base.



11. Press down the locking clamp to secure the leg to the base, and repeat on the other side and for the other foot.



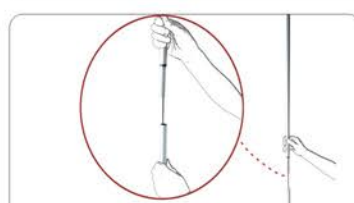
13. Insert the assembled pole into the socket in the base.



14. Pull up the banner and insert the edge of the plastic fitting on top of the pole into the slot in the graphic rail.



15. Repeat for the other banner so the graphic rail for both banners are attached to the top of the pole.



12. Connect the sections of the support pole together.



16. If you need to add tension, use the supplied tool to turn the gear as shown.